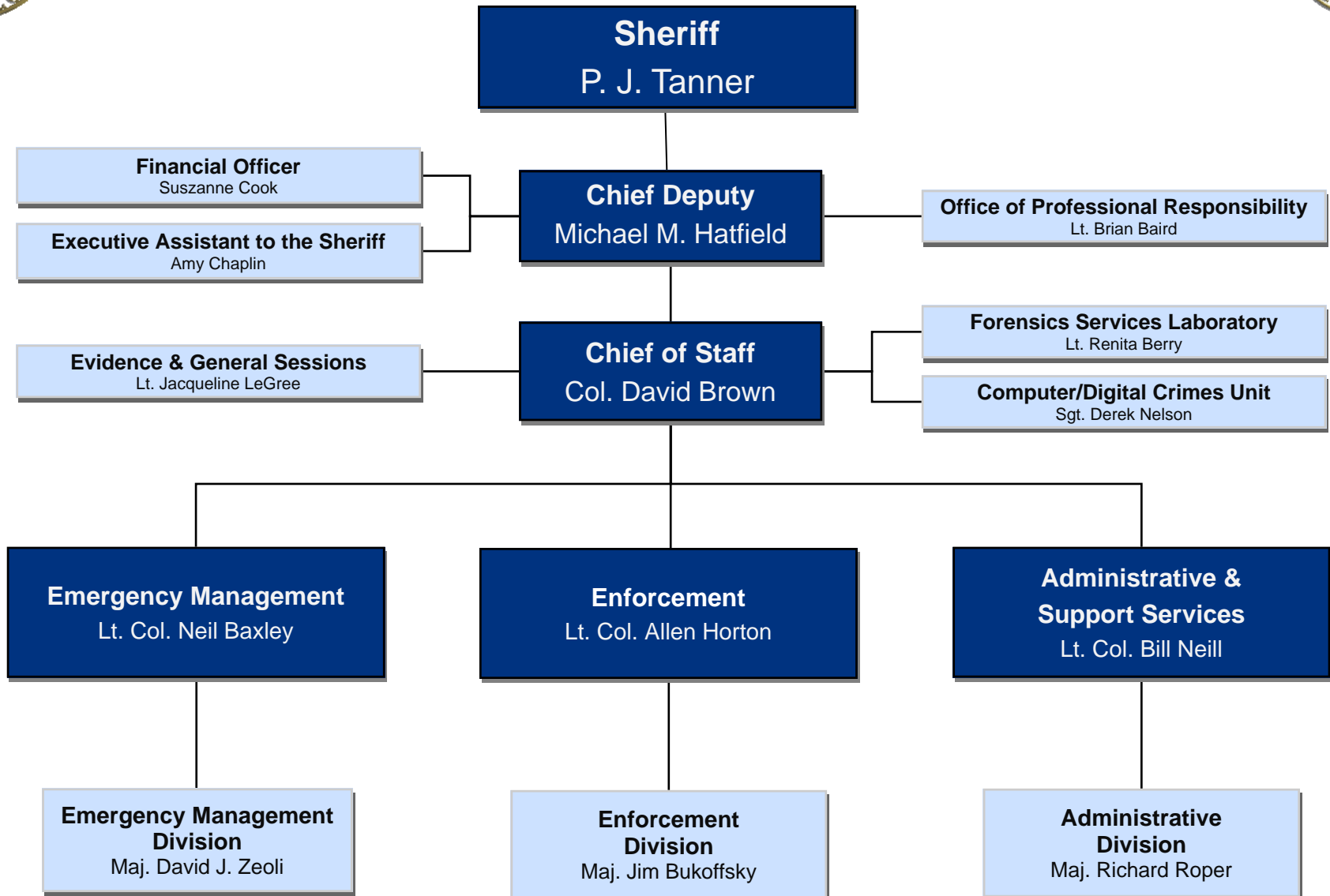




# BEAUFORT COUNTY SHERIFF'S OFFICE ORGANIZATION CHART

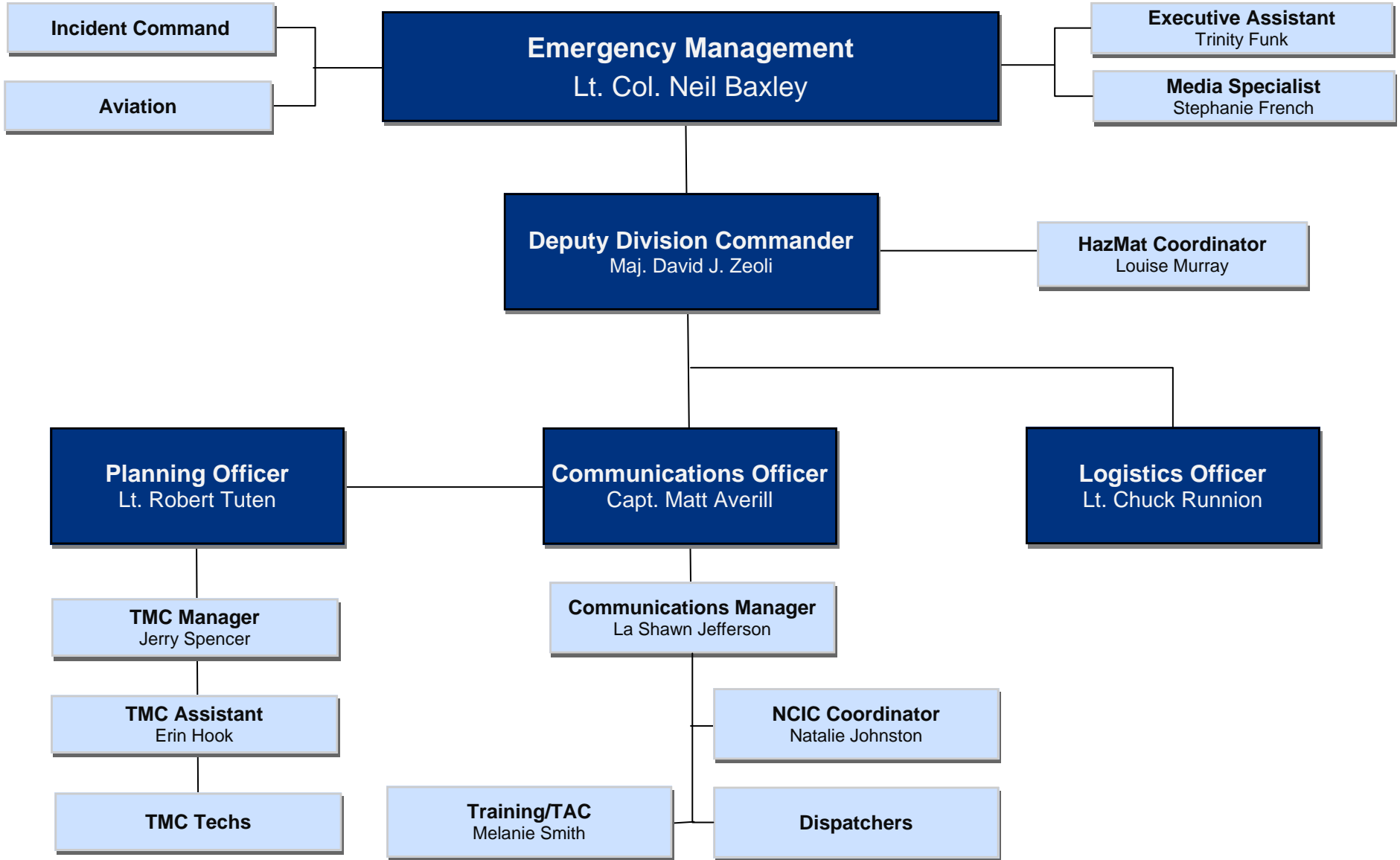
## Command Staff





# BEAUFORT COUNTY SHERIFF'S OFFICE ORGANIZATION CHART

## Emergency Management





# BEAUFORT COUNTY SHERIFF'S OFFICE ORGANIZATION CHART

## Enforcement



**Enforcement**  
Lt. Col. Allen Horton

**Enforcement Division**  
Maj. Jim Bukoffsky

**Northern Enforcement**  
Capt. Jeff Purdy

**Southern Enforcement**  
Capt. Joey Woodward

**Special Operations**

**Northern Patrol Section**  
Lt. Robert Arbelo  
MSgt. Alan Langford

**Northern Investigations**  
Lt. Brian Chapman

**Southern Patrol Section**  
Lt. Jason Covington  
MSgt. Andrew Faucett

**Southern Investigations**  
Lt. Angela Viens

Capt. Kyle Blackmon

Capt. Scott Johnson

N. Patrol Teams

Special Enforcement Unit (North)

Reserve Deputies (North)

**N. Criminal Investigations**  
MSgt. Jeremiah Fraser

Victim Advocacy

Sex Offender Registry

Crime Scene Unit

S. Patrol Teams

Airport Security

K-9 Team

Special Enforcement Unit (South)

Reserve Deputies (South)

**S. Criminal Investigations**  
MSgt. Andres Florencio

Victim Advocacy

Crime Analyst

S.W.A.T. Team

Tracking Team

**Crime Suppression Unit**  
Lt. Todd Calhoun  
MSgt. Adam Zsamar

Alcoholic Beverage Control Team

Crime Analyst

Title 19 Enforcement  
MSgt. George Moreno

Environmental Crime Unit

Dive Team

Explosive Ordinance Team



# BEAUFORT COUNTY SHERIFF'S OFFICE ORGANIZATION CHART

## Administrative & Support Services

