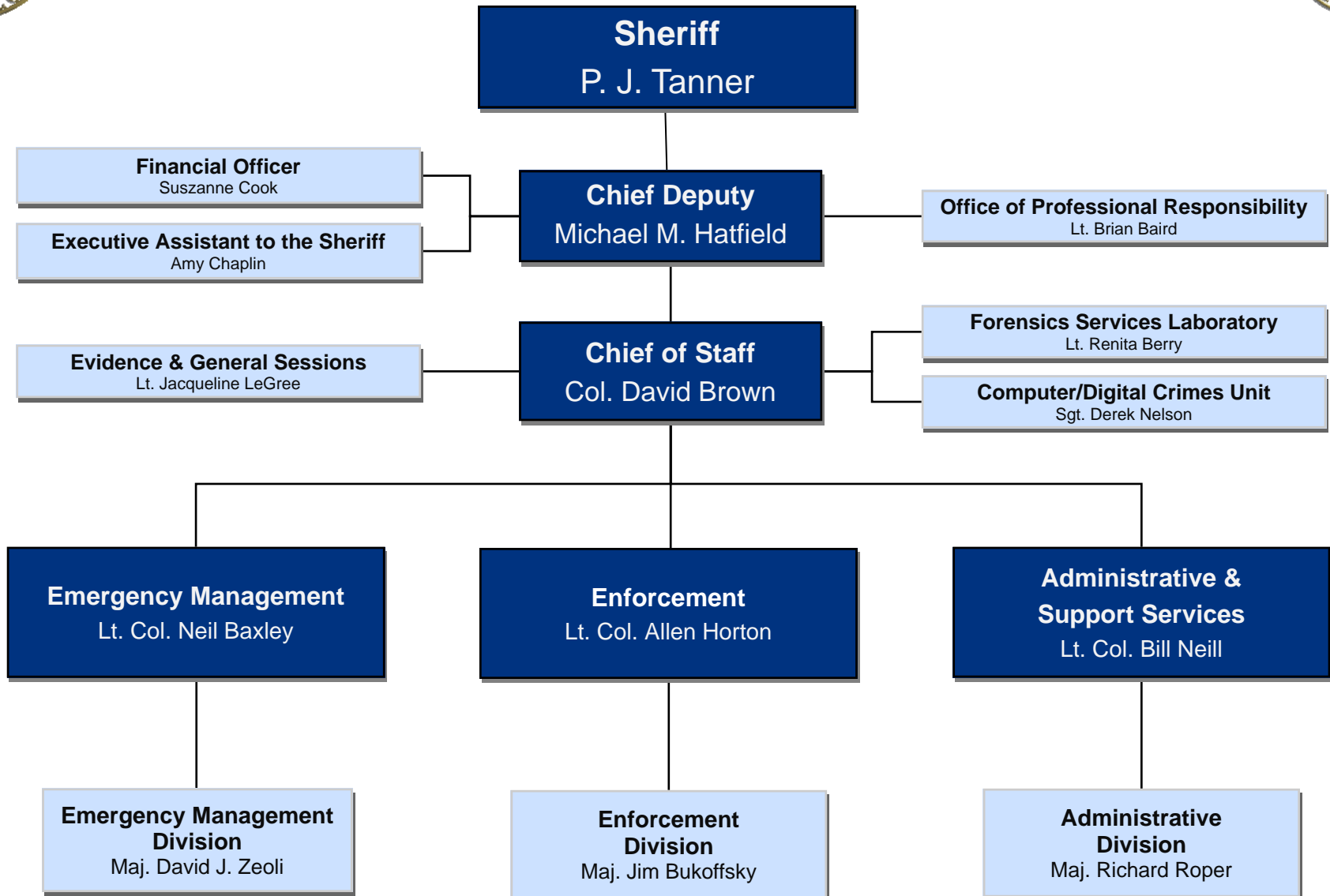




BEAUFORT COUNTY SHERIFF'S OFFICE ORGANIZATION CHART

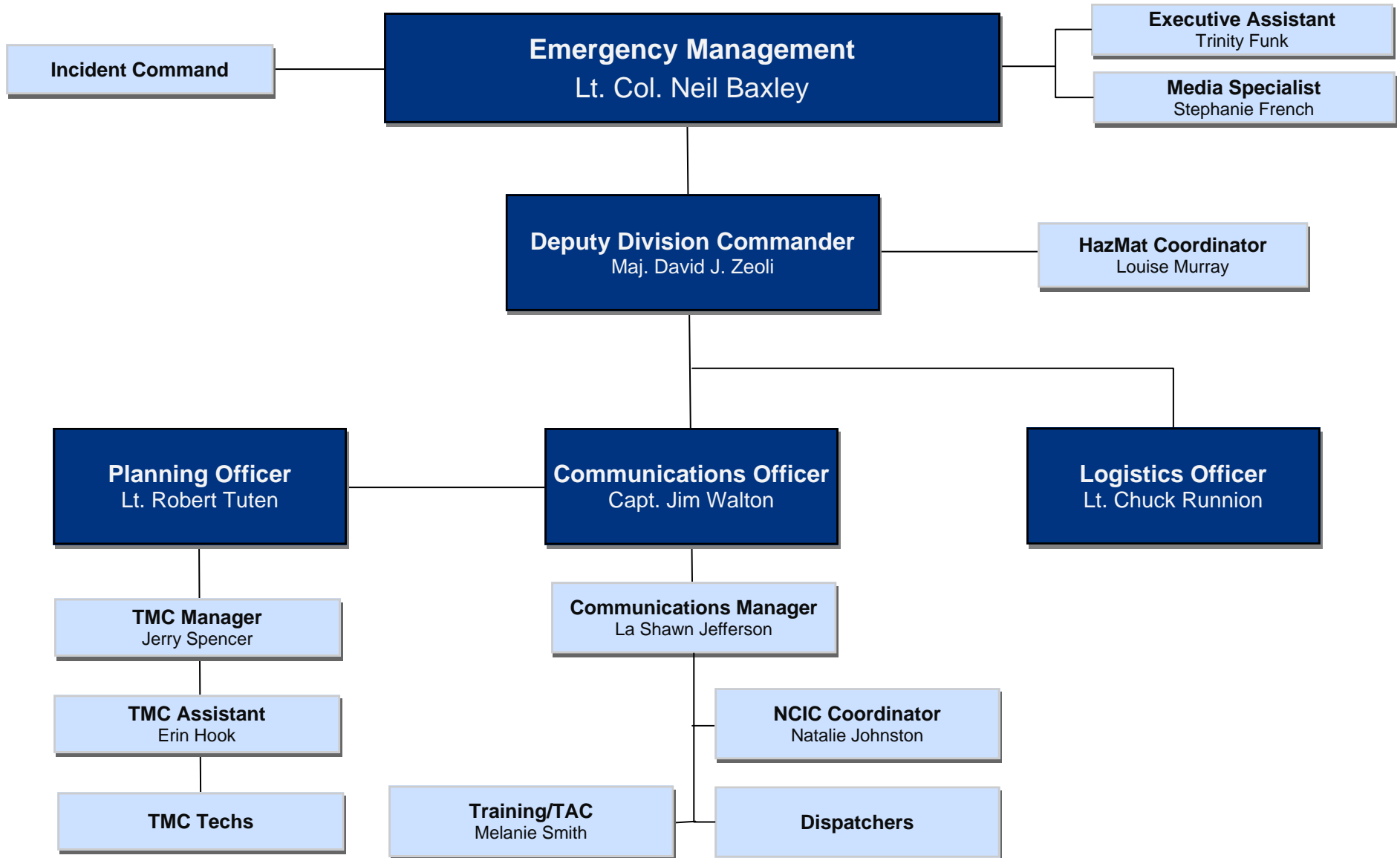
Command Staff





BEAUFORT COUNTY SHERIFF'S OFFICE ORGANIZATION CHART

Emergency Management





BEAUFORT COUNTY SHERIFF'S OFFICE ORGANIZATION CHART

Enforcement



Enforcement
Lt. Col. Allen Horton

Enforcement Division
Maj. Jim Bukoffsky

Northern Enforcement
Capt. Matt Averill

Southern Enforcement
Capt. Joey Woodward

Special Operations

Northern Patrol Section
Lt. Robert Arbelo
MSgt. Alan Langford

Northern Investigations
Lt. Jeff Purdy

Southern Patrol Section
Lt. Jason Covington
MSgt. Andrew Faucett

Southern Investigations
Lt. Angela Viens

Capt. Kyle Blackmon

Capt. Scott Johnson

N. Patrol Teams

Special Enforcement Unit (North)

Reserve Deputies (North)

N. Criminal Investigations
MSgt. Jeremiah Fraser

Victim Advocacy

Sex Offender Registry

S. Patrol Teams

Airport Security

K-9 Team

Special Enforcement Unit (South)

Reserve Deputies (South)

S. Criminal Investigations
MSgt. Andres Florencio

Victim Advocacy

Crime Analyst

S.W.A.T. Team

Tracking Team

Crime Suppression Unit
Lt. Brian Chapman
MSgt. Todd Calhoun

Alcoholic Beverage Control Team

Crime Analyst

Title 19 Enforcement
MSgt. George Moreno

Environmental Crime Unit

Dive Team

Explosive Ordinance Team

Aviation



BEAUFORT COUNTY SHERIFF'S OFFICE ORGANIZATION CHART

Administrative & Support Services

