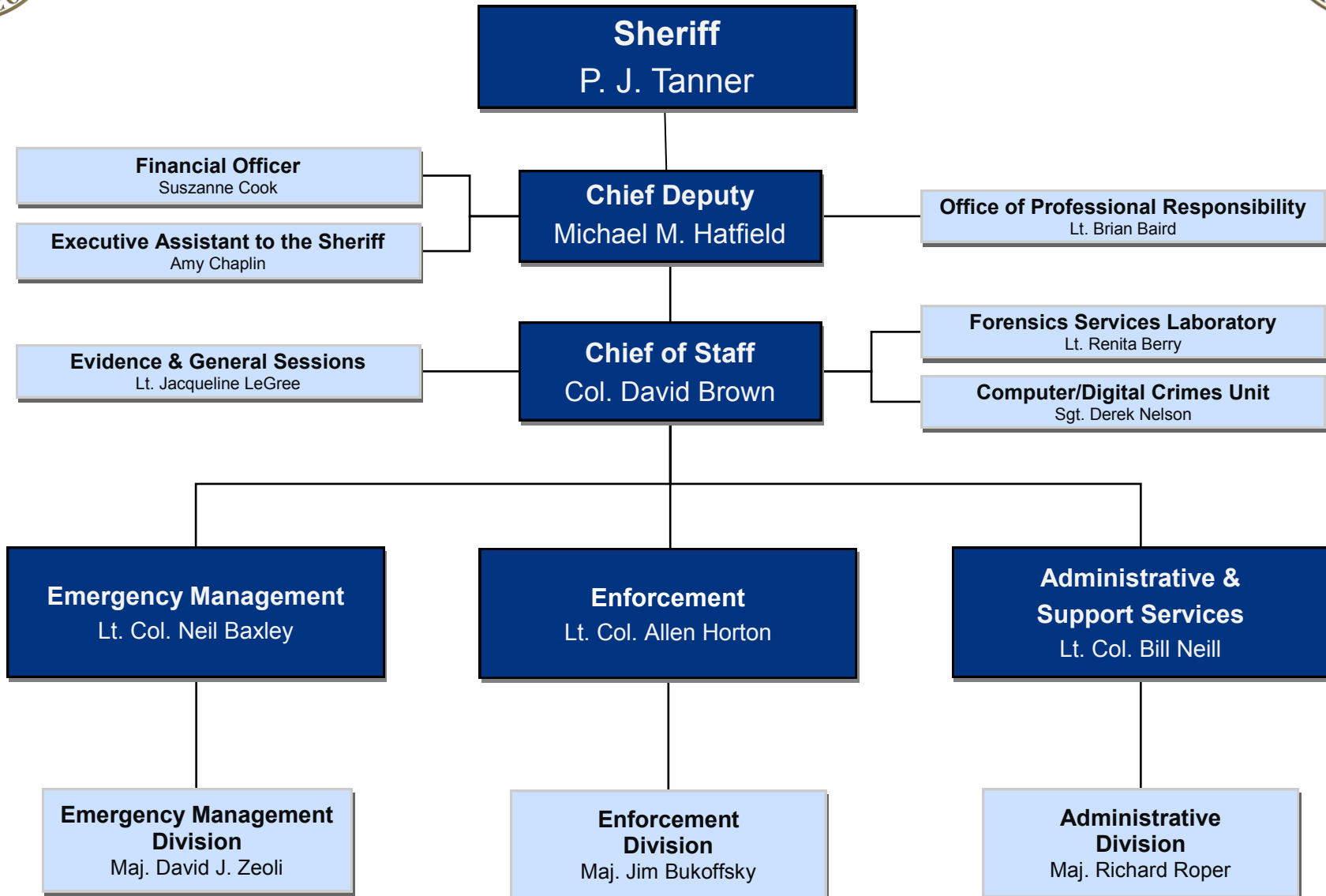




BEAUFORT COUNTY SHERIFF'S OFFICE ORGANIZATION CHART



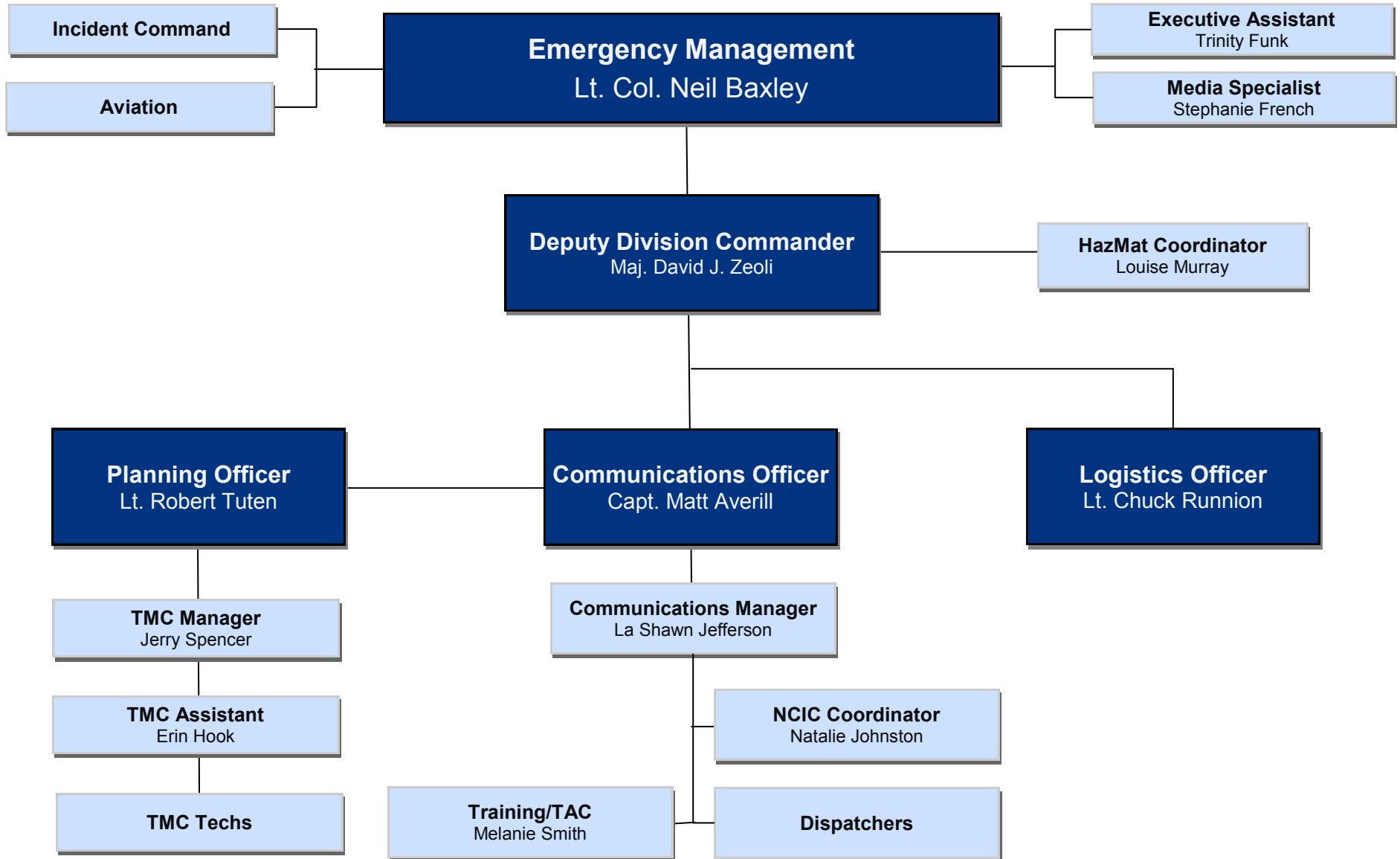
Command Staff





BEAUFORT COUNTY SHERIFF'S OFFICE ORGANIZATION CHART

Emergency Management





BEAUFORT COUNTY SHERIFF'S OFFICE ORGANIZATION CHART

Enforcement



Enforcement
Lt. Col. Allen Horton

Enforcement Division
Maj. Jim Bukoffsky

Northern Enforcement
Capt. Jeff Purdy

Southern Enforcement
Capt. Angela Viens

Special Operations

Northern Patrol Section
Lt. Robert Arbelo
MSgt. Alan Langford

Northern Investigations
Lt. Brian Chapman

Southern Patrol Section
Lt. Jason Covington
MSgt. Andrew Faucett

Southern Investigations
Lt. Andres Florencio

Capt. Kyle Blackmon

Capt. Scott Johnson

N. Patrol Teams

Special Enforcement Unit (North)

Reserve Deputies (North)

N. Criminal Investigations
MSgt. Jeremiah Fraser

Victim Advocacy

Sex Offender Registry

Crime Scene Unit

S. Patrol Teams

Airport Security

K-9 Team

Special Enforcement Unit (South)

Reserve Deputies (South)

S. Criminal Investigations
MSgt. Angela Crumpton

Victim Advocacy

Crime Analyst

S.W.A.T. Team

Tracking Team

Crime Suppression Unit
Lt. Todd Calhoun
MSgt. Adam Zsamar

Alcoholic Beverage Control Team

Crime Analyst

Title 19 Enforcement
MSgt. George Moreno

Environmental Crime Unit

Dive Team

Explosive Ordinance Team



BEAUFORT COUNTY SHERIFF'S OFFICE ORGANIZATION CHART

Administrative & Support Services

